

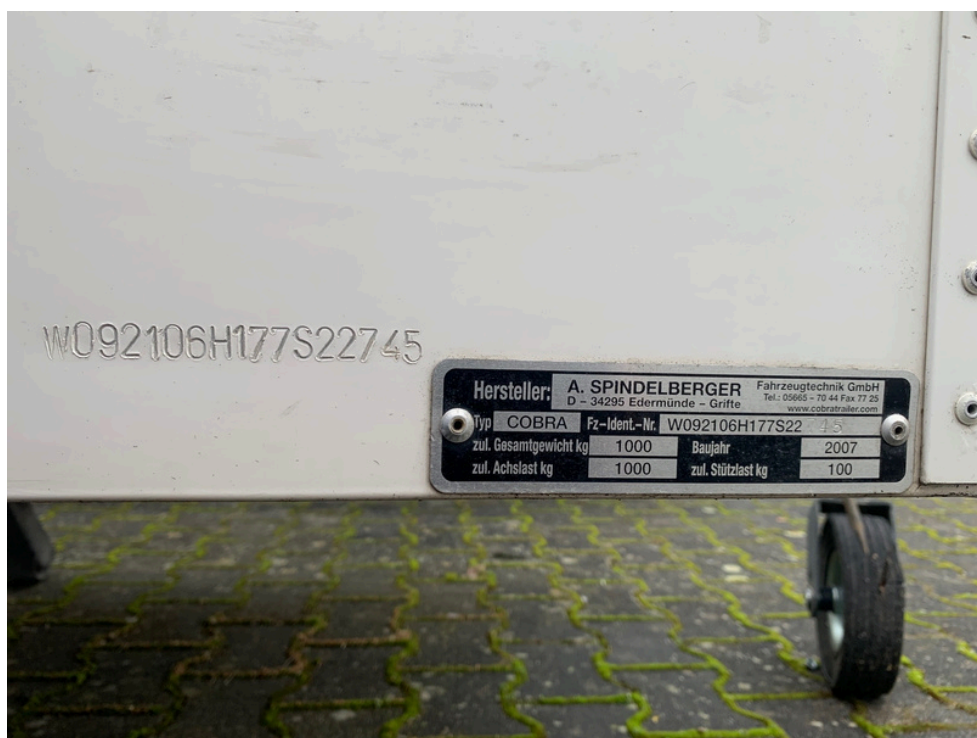
# Required Pictures for Replacement Papers

Below you will find the required photos we need from your trailer. Please make sure the indicated areas are cleaned so that the data is clearly readable in the pictures.

**A picture of the trailer showing the chassis number.**



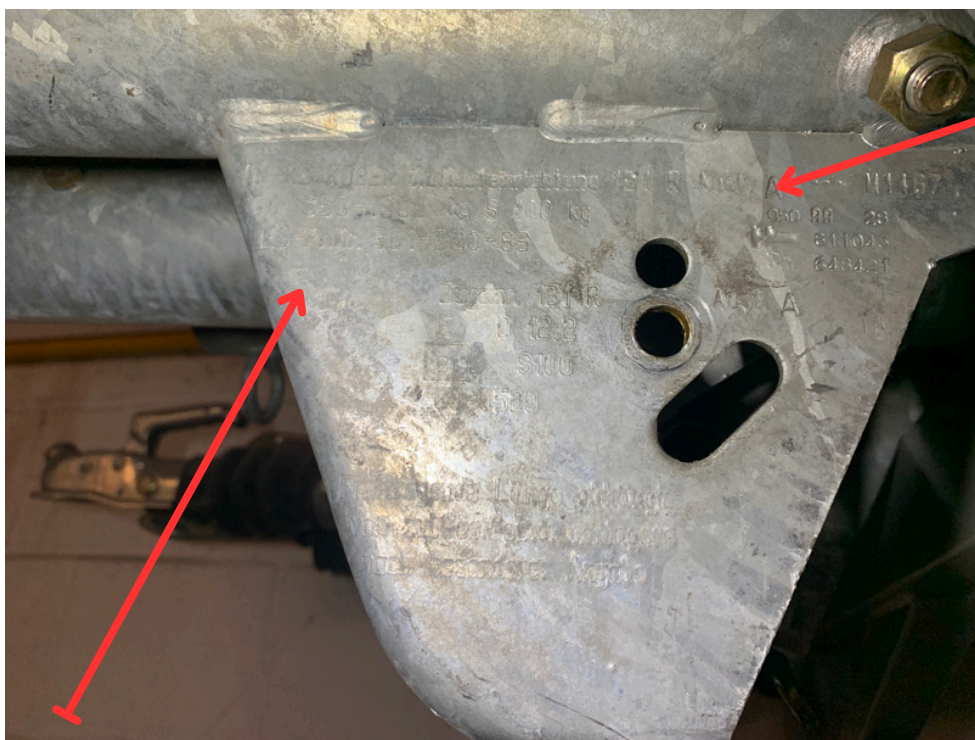
**A picture of the identification plate.**



In the case of a square drawbar  
The field should be clearly visible from the top.



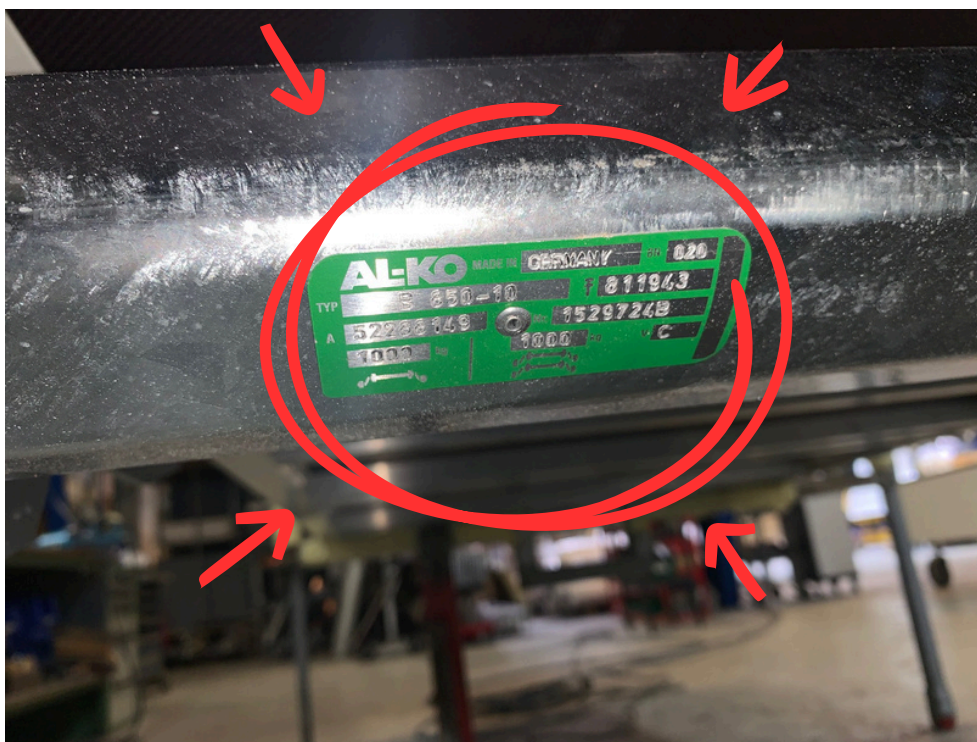
In the case of a round drawbar, the important information is  
located underneath on the “tag”



for example:  
“131R Ausf. A”

for example:  
“EG-Prüfn. 361-320-  
83”

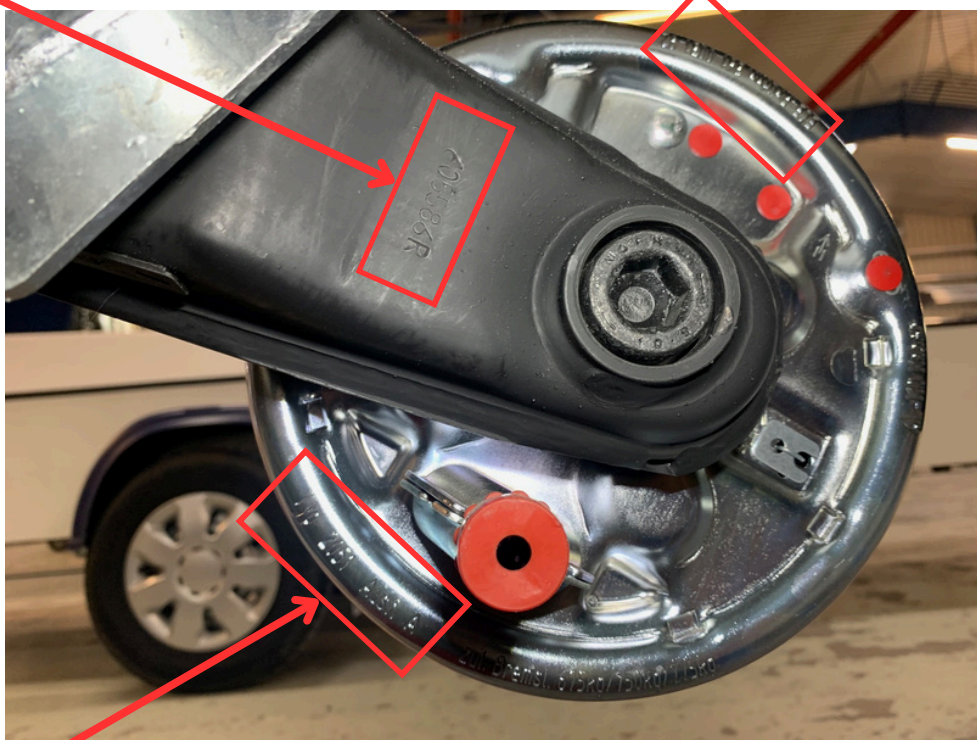
We also require a photo of the axle identification plate.



Brake type: Type  
1636/ Type 1637/  
Type 2051/ Type  
2361

picture of the back side of the brake drum

We must be able to read the entire labeling all around!



for example:  
"Typ 2051 Ausf.A"

We require a photo showing the details on the rim.



And we also need the tire specifications.



THANK YOU!